


Welcome to the Marion Farm Loop

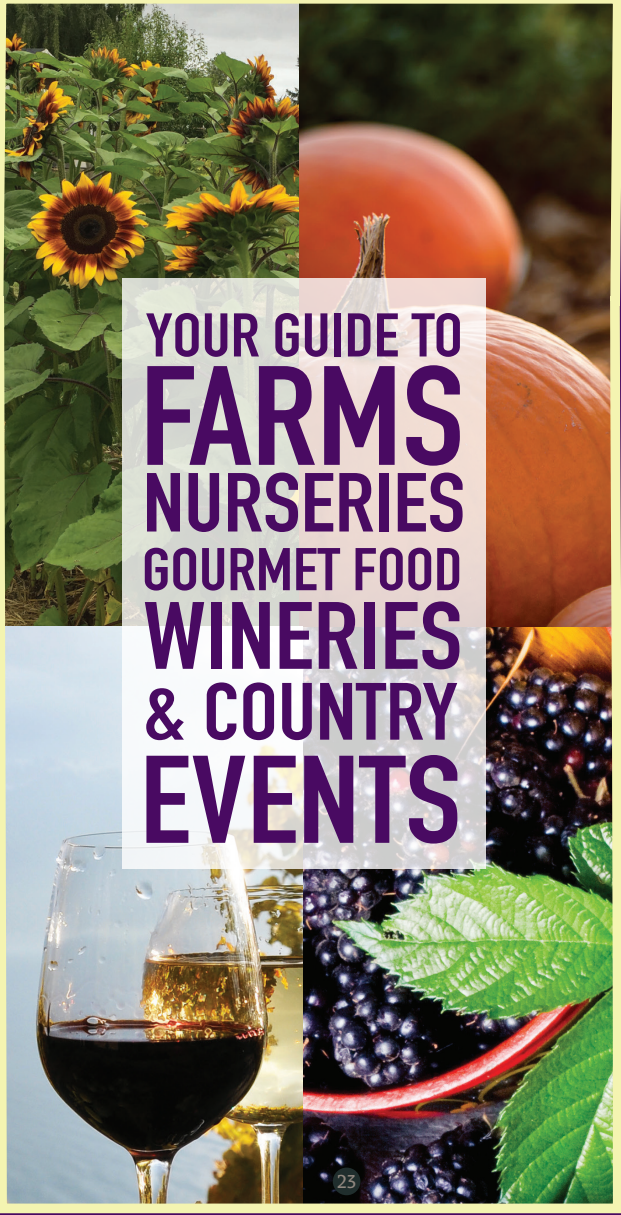
and the communities of Aumsville, Aurora, Brooks, Gervais, Hubbard, Keizer, Salem, Silverton, St. Paul, Stayton Sublimity, Turner, and Woodburn..



OREGON FARM LOOP

WILLAMETTE VALLEY

LOCATOR MAP INSIDE!



**YOUR GUIDE TO
FARMS
NURSERIES
GOURMET FOOD
WINERIES
& COUNTRY
EVENTS**

www.MarionFarmLoop.com

Love local. Local Farms right in Portland's backyard.

The Marion Farm Loop helps you locate a variety of fun and friendly stops including: farm stands with fruits, herbs and vegetables, U-pick, nurseries with plants and flowers, baked goods, gourmet foods, wineries and cideries, friendly farm animals, educational tours/classes and lodging.

Most farm stops have restrooms or porta potties on the farm or nearby. Also, most farms welcome friendly dogs on a leash, but make sure to check before taking dogs from your car. Icons under the farm stop description will note if dogs are not allowed because of health department rules or the presence of farm dogs.

Look at the description of each farm stop to see what products and experiences they have to offer and open hours. All farms and wineries are family owned. They are working farms, so it is best to check with the farms via Facebook, website or phone before you visit.

We hope you visit soon, and often!

-- Your Farmer Friends
on the Marion Farm Loop

www.MarionFarmLoop.com

FARM ETIQUETTE

1. Check farm's website and/or call ahead: farms are subject to last-minute issues and could be closed to visitors
2. Read and obey signs
3. Supervise children
4. Stay out of buildings and off equipment
5. Be careful not to step on crops in field
6. Friendly dogs on leash allowed on some farms. Ask before taking pets from car
7. Enter at your own risk. Farms have limited liability.

 Bike Friendly	 Bus Parking	 Christmas Tree	 Coffee/Hot Drinks Served
 Farm Stay	 Nature Trails/Walking	 No Dogs Allowed	 Nursery
 Educational Tours	 Entertainment	 Friendly Farm Animals	 Farm/Gift Store
 Picnic Area	 Produce	 Public Restrooms	 Retail Meat Production
 Food Served	 Horseback Riding Trail	 Call First	 Venue Rental
 Wine, Cider and/or Beer	 Facebook	 Instagram	Icon Key

Farm stops listed in alphabetical order.

1. Adelman Peony Gardens | Visit our gardens, during


our open house to experience different colors and smells of peonies! Visiting our gardens will include walking our 30 acres of production fields, strolling through our 2 acres of display garden, viewing indoor peony bloom displays, and opportunities to purchase cut flowers or potted peonies in containers to take home. Our display showroom has concrete floors, and is wheelchair/walker accessible. Our display garden has grass walkways that can be wheelchair/walker accessible depending on weather conditions. Our peak bloom time is usually around Memorial Day weekend, but can vary depending on the spring weather. Please call or check our social media for bloom status updates. You can stop by for a hour or spend the whole day. We hope you can come and visit us! More Info: 503-393-6185, peonyparadise.com, info@peonyparadise.com 5690 Brooklake Rd NE, Salem, Gervais. Hosts: Adelman Family. HOURS: May 1st - June 15th, 9am to 6pm, 7 days a week.




2. Al's Garden Center | Al's Garden & Home has proudly

been "growing" with the greater Portland area for almost 75 years. We grow over 80% of our plants, trees, and shrubs, as well as inspiring all of your indoor and outdoor spaces. More info: 503-981-1245, <https://als-gardencenter.com>, 1220 N. Pacific Hwy, Woodburn, OR 97011.

HOURS: Monday - Sunday, 9am - 7pm.



E.Z. ORCHARDS FARM MARKET

Bringing you the bounty of the Willamette Valley SINCE 1929

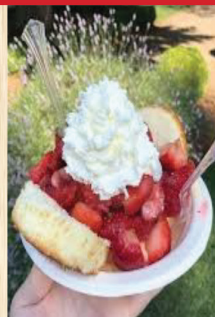
Farm Fresh Local Produce
Fresh Donuts & Baked Goods
Artisan Cheese & Specialty Foods
Fine Wines & Hard Cidre
**Strawberry, Mixed Berry, and
Peach Shortcakes (Summer)**
Fresh-Pressed Apple Cider (Fall)

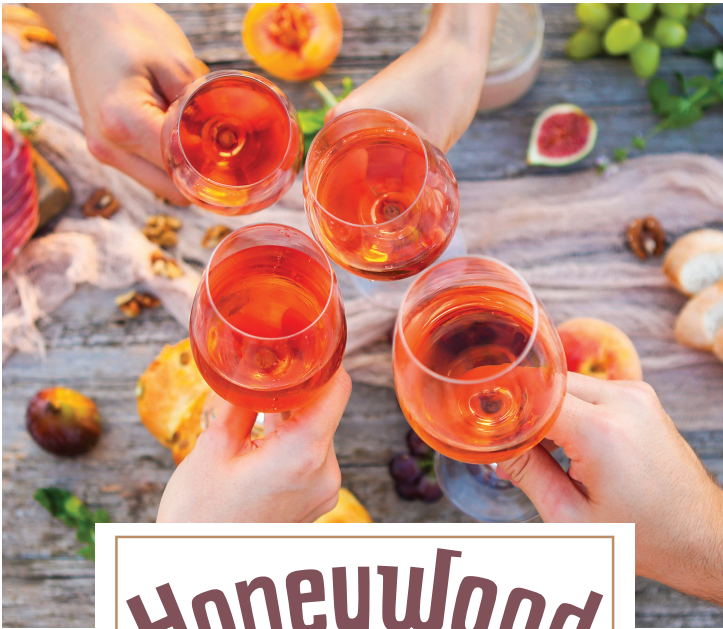
Open All Year
Mon-Fri: 9am to 6pm Sat: 9am to 5pm
5504 Hazel Green Rd. Salem 97305
503-393-1506 ezorchards.com



Visit our Shortcake Stand from Mid-May to Mid-September in our Lavender Garden!

Come to our Fall HarvestFest and enjoy hay rides, petting zoo, corn maze, live music, cider donuts, fresh pressed cider and beyond!





HoneyWood



Oregon's Oldest Winery

WINE FLIGHTS

INDOOR & OUTDOOR SEATING

GOURMET FOOD & GIFTS

OPEN DAILY

Honeywood Winery

1350 Hines St SE

Salem, OR 97302

503-362-4111

HONEYWOODWINERY.COM

3. Arrowhead Lavender Farm & Co.

Established in 2020, our lavender farm will be opening to the public summer of 2023 just in time for the lavender bloom. We will have a farm store selling value added lavender products everyone can enjoy, plants, garden tools, u-pick bouquets and much more. Follow us on social media for extra special events in July. July hours Tue-Thur 9-6 Fri-Sat 9-5 and Sun 12-4. Closed Monday. Aug-Sep 9th Tues-Sat 9-6pm Closed Sun-Mon. Seasonal hours will vary in the Fall & Winter. We are located just minutes out of Salem at 6373 Sunnyview Rd NE on your way to 3 other stops on the farm loop. Call for more info 503-508-7389. Private gatherings upon request, events during the July lavender bloom will be happening. More Info: info@arrowheadlavender.com, 6373 Sunnyview Rd NE, Salem. Hosts: Cat Sandor-Korte.

HOURS: July (The lavender bloom) Tues-Thurs 9-6 Fri/Sat 9-5 Sun 12-4 closed Mondays. August-Sep 9th Tues-Sat 9-6 Closed Sundays and Mondays. Seasonal hours will vary in Fall and Winter.



4. Bauman's Farm & Garden | A family farm located

in the heart of the Willamette Valley. Farm fresh produce and beautiful nursery open year-round. Family fun in every season and special activities throughout the year, such as an award winning harvest festival and some Christmas fun.. Find scratch-baked goodies, berry preserves, gourmet foods and our Hard Cider on tap. Fresh Fruits and vegetables picked daily. Peaches, berries, pickling cucumbers and much, much more! Experience our friendly farm animals, and playground. Dogs are welcome on a leash. We Accept Senior, Nutrition, WIC coupons. More Info: 503-792-3524, baumanfarms.com, 12989 Howell Prairie Rd NE, Gervais. Hosts: Brian and Barb Bauman.

HOURS: Open year-round, Mon-Sat 9a-5p, Closed Sun. Hours may vary by season.



5. Beilke Family Farm | Since 1950, a family farm growing

apples, tomatoes, peppers, pears, prunes, pumpkins and watermelon. 10 acre U-pick apple orchard, bearing 18 varieties, is great fun for families and those looking for lots of fruit. Dwarf apple trees are easily picked without a ladder, even for kids. End of Aug-Nov. Orchard tours for schools available. U-pick tomatoes from 1,000 plants. Aug-Oct. Sink/Port-a-potty available. Due to food safety rules, no animals in the field. Credit card and Nutrition coupons accepted. Website updated for availability. More Info: beilkefamilyfarm.com, 503-393-1077. 4925 Rockdale St NE, Brooks. Hosts: The Beilke Family.

HOURS: Aug-Nov, Mon-Sat 8a-6p, Sun 11a-6p



6. Egan Gardens | We grow perennials, annuals and vegetable starts on the farm that's been in the Egan family since 1875. You can shop in greenhouses full of flowering plants, hanging baskets, and planters. You'll find lots of roses and shrubs, berry plants, and a nice selection of dwarf conifers. A field of perennials changes with the seasons so you'll have a wide selection of flowering plants from spring through fall. We're glad to help with gardening advice – you're talking to real growers, so you can get real answers. Our goal is to grow strong, healthy plants that will thrive in your garden. You can buy lawn furniture anywhere – here it's about the plants.

More Info: 503-393-2131, egangardens.com, 9805 River Rd NE, Salem.

Host: Ellen Egan.

HOURS: 10 am to 5 pm daily, March to October



7. E.Z. Orchards Farm Market | "Bringing you the bounty of the Willamette Valley since 1929". We offer a large variety of produce for every season, gourmet foods, cheeses, and artisan goods. Springtime brings garden plants, seeds and hanging baskets. In the summer you will find strawberry shortcake, sundaes, and milkshakes in a pleasant park setting. HarvestFest in October features pumpkin patch, corn maze, petting zoo, live music, hay rides, educational tours, caramel apples, cider slushies, espresso, pie, hot cider, and our famous apple cider donuts. In December we have Christmas trees and wreaths. We accept Farm Direct Checks and EBT. More Info: 503-393-1506, ezorchards.com, 5504 Hazel Green Rd NE, Salem. Hosts: John Zielinski and Lea Huizenga.

HOURS: Open year-round. Mon-Fri 9a-6p, Sat 9a-5p, Oct only Sun 11a-5p



8. Flying Bee Ranch | Oregon's largest selection of varietal honeys and beekeeping supplies! Our family owned and operated business has been producing local honeys and other products of the hive since 1999. Visit and try more than 20 unique honey varieties from across Oregon. Our Honey Tastings are free and include education about bees, beekeeping, and honey extracting! More Info: 503-399-8409, flyingbeerranch.net, 5180 Lardon Rd. NE Salem. Host: Jeremy Mitchell and Delsey Maus.

HOURS: Open year-round, Tue –Sat 9a-5p



9. Fordyce Farm Inc. | We are a family-owned berry farm offering a wide variety of u-pick and already picked fruits and vegetables.

We have a store, bakery, display garden, beautiful perennial plants, pumpkin patch, and corn maze. We are open during on the weekends from April until the beginning of strawberry season when we begin weekday hours that run to the end of October and on the weekends until Christmas. More info: 503-362-5105, www.fordycefarminc.com, 7023 Sunnyview Rd. NE Salem 97305.

fordycefarminc@gmail.com

HOURS: April: Fri-Sat, 9a-6p. Strawberry season (mid-May)-Aug: Mon-Sat, 8a-6p. Sept: Mon-Sat, 9a-6p. Oct: Mon-Sat, 9a-6p + Sun: 12-6p. Nov-Dec (until weekend before Christmas): Fri-Sat, 9a-6p



**KEN & JUNE'S HAZELNUTS
MELCHER FAMILY FARM**



8046 McKay Rd NE * St. Paul, OR 97137

In-shell Hazelnuts & Walnuts

Raw, Dry, Roasted & Salted Hazelnuts

Hazelnut Meal & Hazelnut Oil

Butter & Jams , Local Honey

Assortment of Chocolate covered hazelnuts

Coffee/ Smoothies

Gift Shop

Peaches Starting late July



Open Year Round

Monday ~ Saturday 9:00 ~ 4:00

Sunday ~ Closed

www.kj hazelnuts.com

503 ~ 633 ~ 2191

10. French Prairie Gardens & Family Farm

| Serving families quality farm fresh produce since 1987. Enjoy country experiences--fresh air, the open & easy pace, the sights & sounds of a working farm, & the soft fragrances of beautiful flowers all around you. Garden Center, Scratch Bakery, Farm Store, Farm Bar (featuring twelve taps and a growler fill), weekend lunch and more! Events: March-Partying with Plants (featuring 2023's Best of the Best), April-Pints & Petunias, June-Berries, Brews & BBQ'S, July-August-Farm Days of Summer, September-Sunflower Festival October-Pumpkin Patch, Pig Races, Mazes. Classes & Farm to Table Dinners throughout the seasons. Visit us today for a trip you won't forget! We accept WIC, Senior, Nutrition coupons. More Info: 503-633-8445, fpgardens.com, 17673 French Prairie Rd, St. Paul. Hosts: The Pohlschneider family.

HOURS: Open Mar: Wed-Sat 10a-4p; Apr-Sept: Tues-Sun 10a-5p; Oct: Tues-Sun 10a-6p ; Nov to mid-Dec: Wed-Sat 10a-4p



11. Godfrey Nursery Inc.

| Godfrey Nursery Inc. is a second generation family owned and operated retail nursery since 1981, and it is open year round. We are located in the heart of the beautiful Willamette Valley and are just seven miles east of Salem. We take great pride in our extensive selection of live plants that are grown right here at our nursery. Along with our huge inventory of plants, Godfrey Nursery carries an incredible array of yard and garden products. We have everything that you need to make your garden and patio beautiful for all four seasons! More info: 503-749-2613, godfreynursery.com, 8834 Shaw Square Road, Aumsville. HOURS: Open year round, Spring and Summer hours 9a-6p, Winter hours 9a-4p



12. Honeywood Winery

| Visit Oregon's Oldest Producing Winery. Established in 1934, we are family owned and operated. Honeywood Winery offers wine tasting daily. Specializing in fruit and specialty wines like Marionberry and Mead, as well as handcrafting a variety of grape wine, including Pinot Noir and Pinot Gris. With over 40 different varieties to choose from--there is something for every palette! In addition to great wines we also have a wonderful gift shop stocked with gourmet Oregon food products, gift items, and gift baskets. Our friendly staff will help each guest find the perfect wine or gift. Indoor and outdoor seating available as well as light bites. More Info: 503-362-4111, honeywoodwinery.com, 1350 Hines St. SE, Salem. Hosts: The Gallick family. HOURS: Mon-Fri 9a-5p; Sat 10a-5p; Sun 11a-5p



13. Ken & June's Hazelnuts at Melcher Family Farm

| The Melcher Family began farming filberts (hazelnuts) in 1957 and was continued by the second generation farmer Dennis. Along with farming, he and his wife started a value-added business, Ken & June's Hazelnuts, (named after Dennis' parents), and now includes their two daughters Jennifer & Julie who have successfully taken the reins and expanded the family business. Our Hazelnut products include Raw, Dry Roasted & Roasted & Salted along with Chocolate coated hazelnuts along with other delicious items. We also grow a variety of peaches. Season starts Late July - Aug. Come and experience the aroma of fresh peaches. - NO U-Pick. Stop by to enjoy our farm scenery and quaint farm store and enjoy espresso drink or smoothie. More info: 503-633-2191, kjshazelnuts.com, email: info@kjshazelnuts.com, 8046 McKay Rd NE, St. Paul 97317

HOURS: Mon-Sat 9a-4p



14. Koch Family Farm

| We grow strawberries, raspberries, marionberries, boysenberries, sweet corn, green beans, tomatoes, cucumbers, peppers, pumpkins, Indian corn, gourds, squash, hay, and straw. Children always welcome on our farm. Hayrides available in October. Our farm store is open June-October 31. Call for hours and availability of the U-pick or ready-pick crop you are after. Please call for directions. More info: 503-538-6834, kochfamilyfarm.com, 4745 Raybell Rd NE, Saint Paul, 97137.

HOURS: Open daily, June-Oct: 9a-6p



TK Orchards

PEACHES & NECTARINES - JULY & AUGUST - AURORA OR

ADDRESS
 23513 NE BOONES FERRY RD
 AURORA, OR 97002

PHONE
 503-678-5227

EMAIL
 TKORCHARDS@GMAIL.COM



Stay up-to-date & share photos from the loop!

[@oregonfarmloop](http://www.facebook.com/OregonFarmLoop)
Post with hashtags of the loop you're on: [#marionfl](https://www.instagram.com/hashtag/marionfl)



BAUMAN'S
Farm & Garden

"Our family growing for your family since 1895"

Farm Store, Bakery, Gift Shop, Cidery,
Coffee Shop and Garden Center.

Stop by for a visit!

12989 Howell Prairie Rd. NE, Gervais, OR 97026
www.baumanfarms.com
503-792-3524



Open All Year!

BAUMAN'S
HARVEST FESTIVAL
LLC

With over 30 activities,
it's not your typical
award-winning Pumpkin Patch...
It's an all-day experience!

12989 Howell Prairie Rd. NE
Gervais, OR 97026
www.baumanshf.com

OPEN
Last week of September
and all of October!



15. Lady Hill Winery | The winery is situated on 1500 acres the family has farmed since the 1850s, and is adjacent to Champoeg State Heritage Area where the first provisional government was founded in 1843. In 1995, vines were added to the fields of grains, grass seed, and vegetables. In addition to the vineyard, fruit is sourced from throughout the Willamette Valley and Washington's Columbia Valley, crafting wines inspired by the best of Bordeaux, the Rhône, Burgundy, and Italy. True Northwest in both history and spirit! Live at Lady Hill events hosted in spacious Columban Hall include a variety of cultural genres such as music theater, film, and ballet; attend, perform, display, entertain in the Atrium. Upstairs spaces are ideal for off-site business retreats or private parties. Seasonal Long Table dinners on the patio feature produce from the now 500 acres of organic vegetables and fruit grown on the farm. A rural pastoral setting to gather, share, recall, and create memories over a glass. More Info: 503-678-1240, ladyhill.com, 8400 Champoeg Rd NE, St. Paul.

HOURS: Open daily 11a-5p



16. Maudie's Flower Farm | Maudie's Flower Farm is a veteran owned, self-serve farm stand and subscription based flower farm located in Turner, Oregon! We provide jar/vase arrangements and wrapped bouquets from our seasonal, locally grown, cut flowers. We also offer mid week flower subscriptions with pick-up or delivery options! More Info: maudiesflowerfarm.com, maudiesflowerfarm@gmail.com, 8643 Shaff Rd SE, Turner. Host: MJ Sphoon

HOURS: May - Oct: Mon, Fri, Sat, Sun 11a-5p



17. Meyer Peach Orchard | This 3rd generation family-owned farm has been operating since 1926. We offer u-pick Red Haven and Veteran peaches (end of July to mid-August), u-pick Loganberries and Boysenberries (June to early July). Before coming out, please call ahead to make sure we are open that day and what produce is available. If the temp exceeds 90°, we will close for the remainder of the day. More Info: 503-362-7153, meyerpeachorchard.com, 5495 Center St NE, Salem, 97317.

Hosts: The Meyer Family.

HOURS: Mon-Thurs 8a-2p, Fri & Sat 8a-6p, Sun noon-4p



18. Minto Island Growers | Just 10 minutes from downtown Salem, our Farm Stand offers fresh certified organic produce and fruit, an on-site Farm Food Cart, and local beer and cider on tap. Come to Pick-Your Own strawberries, blueberries, tomatoes, and flowers (contact us for seasonal schedule). Our onsite Farm Food Cart has a menu inspired by the seasonal bounty featuring delicious wood-fired pizzas, salads, seasonal berry milkshakes and farm fresh specials. Also home to Oregon's only farm-scale *Camellia sinensis* tea garden, you can find a unique gift in black, green and oolong teas or take home a tea plant to pluck and process your own home-grown tea. More info: 503-931-6840, mintogrowers.com, 3394 Brown Island Rd S, Salem. Hosts: Elizabeth Miller & Chris Jenkins.

HOURS: Open April-Oct. Check website for seasonal hours.



19. Nottinghamshire Farms | A certified organic fruit and vegetable family farm offering high-quality organic fruit and vegetables. Our crops include strawberries, peas, cucumbers, zucchini, sweet corn, potatoes, winter squash, pumpkins and more. U-pick flowers and pickling cucumbers, call for availability. We are located just one-quarter mile from Champoeg State Park. Come and visit our farm store! More Info: 503-633-5019, nottinghamshirefarms.com, 22133 French Prairie Rd NE.

HOURS: May-Oct, 8a-4:30p



20. Pudding River Wine Cellars | A vineyard and winery producing small-lot, boutique styled wines including Pinot Noir, Syrah, Malbec, Chardonnay, and Pinot Gris. More Info: 503-365-0391, puddingriver.com, 9374 Sunnyview Rd NE, Salem. Host: Sean Allen.

HOURS: Feb-Dec, Wed-Sun, 12p-5p



21. Rose Family Farm | Beautiful variety of fresh seasonal produce. Cut flower bunches grown and arranged on the farm. Medicinal, tea and culinary herbs. Specialty greens, microgreens and edible flowers. Sauces, jams/jellies, soups, spices. Pickles of all kinds. Lavender products. All grown regeneratively. Specialty flower arrangements and gift baskets available to order. Workshops offered in Permaculture, kitchen gardens, and floral design. More Info: 503-839-8419, rosefamilyfarmnw@gmail.com, 17805 Monnier Rd NE, Hubbard. Host: Gina Pagano-Rose.

HOURS: July 1–December 20th



22. Scenic Valley Farms | A multi-generation family farm, vineyard and winery. Enjoy our handcrafted estate wines served out of our spacious tasting room. Relax by the fireplace, stroll through the antique tractor collection or bring a picnic lunch to share on the patio. We offer indoor and outdoor seating in a family friendly atmosphere out on the farm. More Info: 503-393-6227, scenicvalleyfarms.net, 12423 River Rd NE, Gervais. Hosts: The Zielinski Family.

HOURS: Sun 12p-4p and by appt. Call 503-393-6227 for exceptions.



23. Schlechter Farms, Inc. | We are a family farm—Jim's grandfather started the farm in 1909. We specialize in our mouth-watering, fresh-from-the-field sweet corn. We open our fruit and vegetable stand as soon as the corn ripens in late July or early August. We also grow peppers, cucumbers, zucchini, hot chilis, tomatoes, watermelons, cantaloupe, broccoli, cabbage, cauliflower, winter squash, onions, pumpkins and peaches. We offer online ordering on our website: schlechterfarms.com. More Info: 503-792-3328, info@schlechterfarms.com, schlechterfarms.com, 10143 86th Ave NE, Salem.

Hosts: Jim Schlechter

HOURS: Early August to Mid October.



Arrowhead

LAVENDER FARM & CO.

EST. 2020

6373 Sunnyview Rd NE
Salem, OR 97305



24. Sebright Gardens | Specialty plant nursery offering a plethora of shade-tolerant plants for purchase such as: several hundred hosta varieties, hardy ferns, epimediums and much more. Four acres of botanical display gardens at the nursery in a bucolic setting for visitor enjoyment. Dogs allowed in limited areas. More Info: 503-463-9615, sebrightgardens.com, 7185 Lakeside Dr NE, Salem. Hosts: Thomas and Kirk.

HOURS: Open daily, Apr-Oct, 10a-5p



25. Sublime Organics | Sublime Organics, LLC, which is owned and operated by Greg and Ellen Wilt, was established in 2014 and certified as organic by Oregon Tilth. Our mission is to produce healthy organic food simply and sustainability, while being good land stewards. Our farm is 67 acres in total; we cultivate about 4 acres per year for market vegetables and have a high tunnel, allowing us to grow through all seasons! In addition to our fruit orchard, we have raspberries and harvest wild blackberries; all of which provide excellent ingredients for delicious jams. About 20 acres of the farm is organic pasture, and another 20 acres is currently transitional organic pasture. The remainder of the farm is forested watershed and wetlands with a seasonal stream and pond. We take great pride in our riparian land and protect it with assistance through a Conservation Reserve Program with the USDA, as well as being certified Salmon Safe. Our certified organic products are diverse; we provide market vegetables and fruit wholesale to grocery stores and restaurants. We do limited CSA, point of sale, and farmer market sales. Additionally, we raise Muscovy ducks for meat and eggs, and Boer goats, Katahdin sheep, and grass-fed beef for high quality meat. Our goal is to raise livestock in a humane and ecologically sustainable manner and add diversity to our farming practices while supporting biodynamic principles, and we have been recently certified Animal Welfare Approved by a Greener World. More info: 907-306-4342, <https://www.sublimeorganicsllc.com>, 7908

Boedigheimer Rd SE, Sublimity. Hosts: Greg and Ellen Wilt.

HOURS: Daily, year-round, 9a-5p



26. TK Orchards | U-Pick and Picked Peaches and Nectarines, many varieties ripening constantly throughout our season. Beautiful orchard, very family friendly, trees are kept low so no ladders are needed. Come taste these tree ripened peaches, pick your own right off the tree or enjoy our pre-picked flats that are picked fresh every morning. Please use Facebook or call 503-678-5227 to make sure we are open or to reserve flats. More info: 503-678-5227, www.facebook.com/TkOrchards, 23513 Boones Ferry Rd NE, Aurora, OR 97002.

HOURS: July and August, Monday to Friday 8-6, Saturdays 8-5, Closed Sundays



27. TopWire Hop Project | If you want to be surrounded by a lush field of Centennial hops, catch a glimpse of Mt. Hood and drink the best craft beer in an open-air setting, there is only one place to go. Drive down Lupulin Lane (a half-mile entrance through lush 18-foot high hop rows) before arriving at TopWire, a one-of-a-kind beer garden experience situated on the beautiful estate of Crosby Hop Farm, an independent, fifth-generation hop grower. The tap list features beers brewed by Crosby Hops customers from around the country, including many of the most well-regarded craft beers showcasing new, classic, and novel hop varieties from the farm. The spacious outdoor area features a large patio where people of all ages and dogs on leash can gather and play. More Info: 503-765-1645, 8668 Crosby Rd NE, Woodburn, topwirehp.com.

HOURS: May-Oct, Thur and Sun 11a-8p, Fri and Sat 11a-9p



28. True North Orchards | Charming family farm nestled in a peaceful setting. We have a wide variety of U-pick fruits including 9 varieties of apples, 2 varieties of pears, 5 varieties of plums, 4 varieties of cherries, and several varieties of grapes, and English walnuts. Many of our trees are dwarf height so kids can easily U-pick. No ladder picking is allowed. Our fruit stand features hand pressed apple cider, honey, a large selection of pumpkins and squash, and several products produced from our land. Fresh cider tastings are held in the fall. All credit cards accepted with \$5 minimum purchase. Well-behaved dogs are welcome on leash. More info: 503-348-4313, truenorthorchards.com, 5650 Lardon Rd NE, Salem. Hosts: Paul and Dianne McGill.

HOURS: Aug-Oct open Monday through Saturday from 9a–dusk; Sundays from 9a–3p



29. Willamette Valley Pie Co. | Stop by our charming country store for a fresh baked slice of pie located on our 3rd generation berry farm! Family owned and operated, the Willamette Valley Pie Company bakes up the best pies loaded with all natural locally sourced fruit in a flaky crust and served à la mode! We also offer coffee and other baked goodies, a tasty lunch menu, and local gifts and souvenirs. More Info: 503-362-8857, wvpie.com, 2994 82nd Ave NE, Salem.

HOURS: Open year-round. Winter: Mon-Fri 8a-6p, Sat 9a-5p. Summer: Mon-Fri 8a-7p, Sat 9a-6p, Sun 12-5p



10143 86th Ave NE, Salem, OR 97305, USA
P: 503-792-3328
E: info@schlechterfarms.com

Schlechter Farms is continuing a family farm tradition that dates back to the early 1900's when Jim's grandfather, Joseph Schlechter, settled in the Willamette Valley. Jim started farming in 1971 with wheat and clover seed, but switched in 1978 to sweet corn and onions. Over the decades, winter squash, grass for seed, broccoli and four gardens of peppers, tomatoes, cucumbers, zucchini, and other farm-fresh vegetables have been added to the crop rotation. Part of the farm is located in Lake Labish, where we grow the red and yellow onions for which Lake Labish is famous.

Many of the produce vendors at farmer's markets in Oregon purchase sweet corn from us for resale to their farm market customers. We also supply corn and other vegetables to several of the Willamette Valley farm produce stands and grocery stores. And since the early 1980's, we've operated a produce stand of our own during the corn season from early August through late October.

CERTIFIED ORGANIC PRODUCE

Farm Store Open
May - October 9-4:30

Strawberries, Slicing Cucumbers, Peas, Sweet Corn, Pumpkins, U- Cut flowers, U- pick pickling cucumbers and more!

22133 French Prairie Rd ,
St.Paul OR 97137
Just ¼ mile from
Champoeg State Park.

join our newsletter

Thank you for visiting

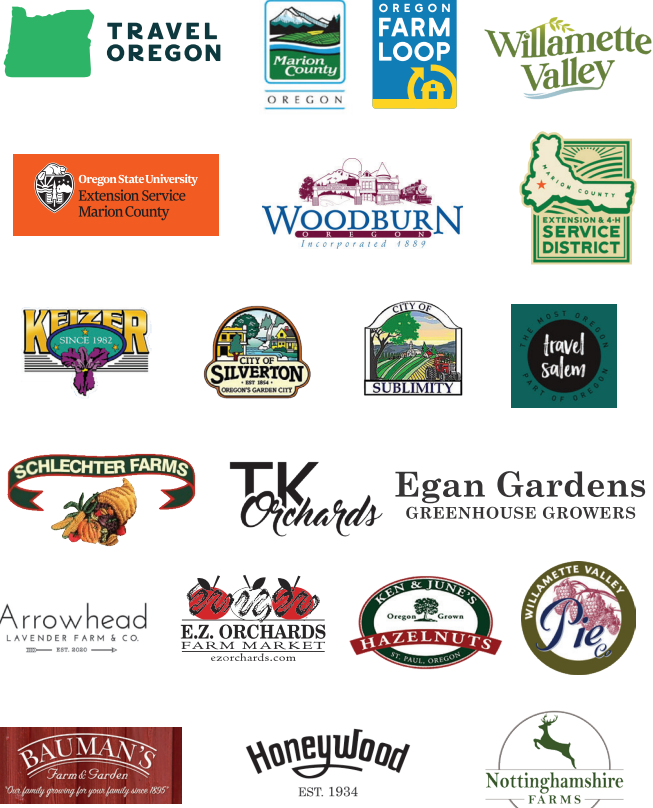


Oregon Farm Loop connects local family farms and value-added businesses with the traveling public.
www.oregonfarmloop.com



Oregon Farm Loop is a program of Oregon Agritourism Partnership, an Oregon nonprofit.

Thank you to our Farm Loop Supporters



SHOP

AT THE SOURCE

WILLAMETTE VALLEY FARMS



Most farm loop stops carry all four farm loop brochures or visit

www.oregonfarmloop.com

We Do Flowers!

Big blooming plants fresh from our greenhouses:
 Perennials, container and bedding plants,
 veggie plants, lush hanging baskets and
 planters, shrubbery, pottery and good advice.

Open 10 to 5 daily, March - October

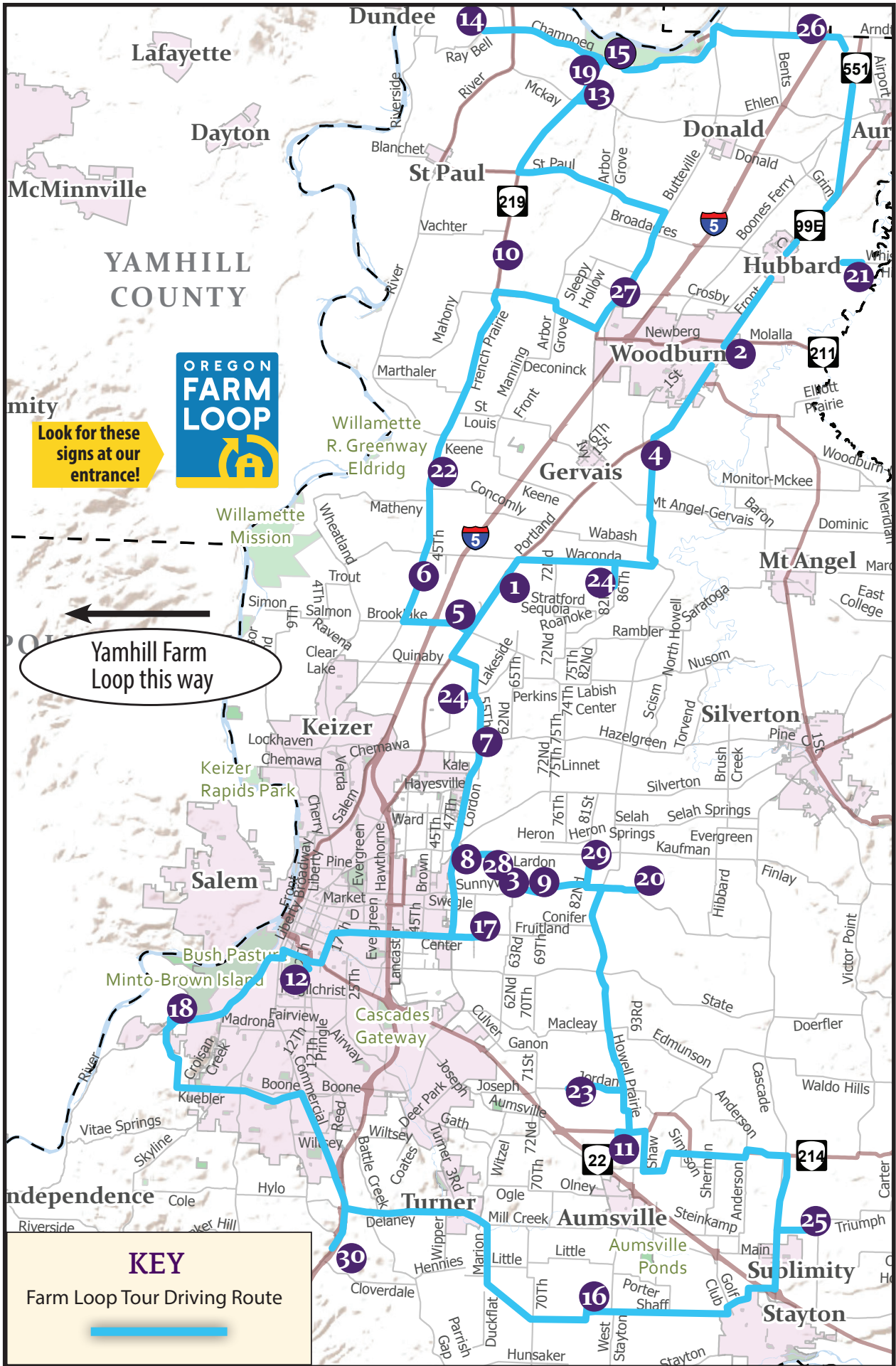
Egan Gardens
 GREENHOUSE GROWERS

(503)393-2131

9805 River RD NE Salem, OR 97303

EganGardens.com





KEY

Farm Loop Tour Driving Route





- 1 **Adelman Peony Gardens**
503-393-6185
5690 Brooklake Rd NE, Salem

- 2 **Al's Garden Center**
503-981-1245
1220 N. Pacific Hwy, Woodburn

- 3 **Arrowhead Lavender Farm & Co.**
503-508-7389
6373 Sunnyview Rd NE, Salem

- 4 **Bauman's Farm & Garden**
503-792-3524
12989 Howell Prairie Rd NE, Gervais

- 5 **Beilke Family Farm**
503-393-1077
4925 Rockdale St NE, Brooks

- 6 **Egan Gardens**
503-393-2131
9805 River Rd NE, Salem

- 7 **E.Z. Orchards Farm Market** 503-393-1506
5504 Hazel Green Rd NE, Salem

- 8 **Flying Bee Ranch**
503-399-8409
5180 Lardon Rd. NE Salem

- 9 **Fordyce Farms Inc.**
503-362-5105
7023 Sunnyview Rd. NE, Salem

- 10 **French Prairie Gardens**
503-633-8445
17673 French Prairie Rd, St. Paul

- 11 **Godfrey Nursery Inc**
503-749-2613
8834 Shaw Square Road, Aumsville

- 12 **Honeywood Winery**
503-362-4111
1350 Hines St. SE, Salem

- 13 **Ken & June's Hazelnuts at Melcher Family Farm**
503-633-2191
8046 McKay Rd NE, St. Paul

- 14 **Koch Family Farm** 503-538-6834
4745 Raybell Rd NE, Saint Paul

- 15 **Lady Hill Winery**
503-678-1240
8400 Champoeg Rd NE, St. Paul

- 16 **Maudie's Flower Farm**
8643 Shaff Rd SE, Turner

- 17 **Meyer Peach Orchard**
503-362-7153
5495 Center St NE, Salem

- 18 **Minto Island Growers**
503-931-6840
3394 Brown Island Rd S, Salem

- 19 **Nottinghamshire Farms**
503-633-5019
22133 French Prairie Rd NE

- 20 **Pudding River Wine Cellars**
503-365-0391
9374 Sunnyview Rd NE, Salem

- 21 **Rose Family Farm**
503-839-8419
17805 Monnier Rd NE, Hubbard

- 22 **Scenic Valley Farms**
503-393-6227
12423 River Rd NE, Gervais

- 23 **Schlechter Farms, Inc.**
503-792-3328
10143 86th Ave NE, Salem

- 24 **Sebright Gardens**
503-463-9615
7185 Lakeside Dr NE, Salem

- 25 **Sublime Organics**
907-306-4342
7908 Boedigheimer Rd SE, Sublimity

- 26 **TK Orchards** 503-678-5227
23513 Boones Ferry Rd NE, Aurora

- 27 **TopWire Hop Project**
503-765-1645
8668 Crosby Rd NE, Woodburn

- 28 **True North Orchards**
503-348-4313
5650 Lardon Rd NE, Salem

- 29 **Willamette Valley Pie Co.**
503-362-8857
2994 82nd Ave NE, Salem

- 30 **Willamette Valley Vineyards**
503-588-9463
8800 Enchanted Way SE, Turner